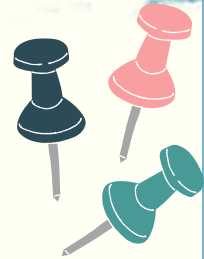


**ASIAN
CULTURAL
ENGAGEMENT
CENTER**
At Virginia Tech*

Asian Cultural Engagement Center



ASIAN AND ASIAN AMERICAN STUDIES FALL 2023 COURSE GUIDE

Contact Information:

Dr. Nina Ha,

Director of Asian Cultural Engagement Center

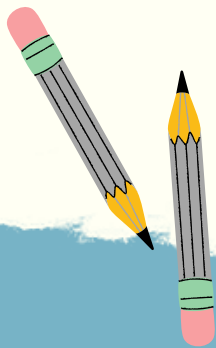
nha@vt.edu

Find us on our Social Media accounts.

Facebook: @VTACEC

Instagram: @VTACEC

Twitter: @acec_vt





ASIA (ASIAN STUDIES MINOR) CLASSES

For information about the minor, please contact coordinator Helen Schneider (hmsvt.edu).

ASIA MINOR: FOUNDATIONAL

HIST 1354 (CRN: 86189): Security and Conflict in Modern East Asia

Survey of the 20th century history of five states in northeast Asia, People's Republic of China, Taiwan, Japan, North and South Korea, and the connections between them. Causes and consequences of war, colonization and nationalist movements and their implications for contemporary regional and global relations. Emphasis on cultural concepts, political ideologies, social relations and historical conflicts as background to current security concerns.

F Skiles | psalm23@vt.edu | Online Synchronous | MWF 10:10-11:00 AM | Pathways 2 and 3

RLCL 1904: Religion and Culture in Asia

Historical and geographical overview of diverse religious/cultural traditions in Asia, such as Hinduism, Buddhism, Sikhism, Confucianism, Daoism, and Shinto. Investigation of the categories "religion" and "culture" and their interactions in Asia. Examination of different methodological and interdisciplinary approaches and their integration, with emphasis on critical thinking about the complexities of studying religion and culture in Asia. Asia on a global stage, including Western views of Asia and Asian views of the West.

P Schmitthenner | pschmitt@vt.edu | MCB 232 | MWF 11:15 AM-12:50 PM (CRN: 89468) | Pathways 2

A Abeysekara | ananda@vt.edu | Online Synchronous | TR 8:00-9:15 PM (CRN: 90471) | Pathways 2





ASIA MINOR: HISTORY

HIST 3254 (CRN: 86223): The Vietnam War

We will explore the roots of U.S. involvement in Vietnam; foreign policy and the Cold War context; experiences of soldiers, veterans, and civilians on all sides of the conflict; class, race, and gender; the antiwar movement; collective memory and American national identity; and the war's legacies and lasting consequences.

J Higgins | jasonhigginsevt.edu | MCB 230 | TR 11:00 AM-12:15 PM | Not a Pathways course

HIST 5214 (CRN: 86245): Topics in Global History

This is a graduate-level class which may be open to advanced undergraduates. Please contact Dr. Schneider for more information.

Topic: War and Society in Modern East Asia | This seminar will examine scholarship and popular representations of 19th and 20th century conflicts in Korea, China, and Japan, including Japan's imperialist expansion, wars between China and Japan, the Boxer Rebellion, China's Civil War, and the Korean War. We will think about the aftermaths and memories of these conflicts, particularly in terms of how they impacted and shaped society, domestic politics, and foreign relations.

H Schneider | hmsevt.edu | MAJWM 427 | T 5:30-8:20 PM | Not a Pathways course

ASIA MINOR: CULTURE AND SOCIETY

ART 1004: East Asian Water Media**

East Asian Water Media is a studio art course for non-majors. Students use Sumi ink and bamboo brushes to create a variety of drawings and paintings, learning both traditional methods and contemporary approaches. Sumi ink paintings depict the essence of an object or scene rather than its outward appearances. Sumi ink painting is a contemplative form of expression that emphasizes self-cultivation. It has been practiced in East Asia for over a thousand years.

W Jung | wonjung@vt.edu | ARMRY 105 | MW 9:20 AM-12:05 PM (CRN: 90552) | Pathways 6A

W Jung | wonjung@vt.edu | ARMRY 105 | MW 12:20-3:05 PM (CRN: 90553) | Pathways 6A





CHN 2734 (CRN: 83026): Chinese Culture and Civilization

Survey of Chinese Culture and Civilization. Interactions between major political and historical events, social and artistic movements in China. Chinese literature, art, architecture, film, and theater in the context of Chinese cultural history. Aesthetic and rhetorical strategies. Interpretation of intercultural experiences from different vantage points. Taught in English.

M Teo | mcteo@vt.edu | PAM 3001 | MWF 11:15AM-12:05 AM | Pathways 2

RLCL 1034 (CRN: 90481): Religion in the Modern World

This class will have about a quarter of the content on Asian religions. Modern challenges to traditional religion and responses to these challenges, including: religion as an object of critique; law, sovereignty, and religion; religion, gender, and race; religion, science, and technology; religion and media presentations.

Z Ni | nizhange@vt.edu | MCB 318 | MWF 11:15 AM-12:05 PM | Pathways 2

RLCL 2514 (CRN: 90506) / SOC 2514 (CRN: 90507): Asian American Experience

Critical overview of diverse Asian-American experience, including the complexity of minority status, and meaningful citizenship in the USA. Topics include different historical tracks of various Asian ethnicities, experiences of racism, activism, cultural adaptation and conflict, and economic survival and success.

N Ha | nha@vt.edu | MCB 209 | TR 2:00-3:15 PM | Pathways 3 and 7

RLCL 3024 (CRN: 90489) / ENGL 3024 (CRN: 90511): Religion and Literature

This class will be taught with a focus on Asian science fiction. Read works from world literature, guided by selected critical readings. Compare/contrast diverse models of religion and literature. Study how modernity has impacted traditions of religion and culture. Interpret literary texts that draw from multiple religions. Analyze religion-literature controversies in a range of social, cultural, political contexts. Synthesize sources of multiple media, formats, and contexts.

Z Ni | nizhange@vt.edu | MAJWM 100 | TR 9:30-10:45 AM | Pathways 1a and 2





RLCL 4324 (CRN: 90513) (Pre: RLCL 2004): Topics in Religion and Culture

“Life and Legacy of Gandhi.” This course aims to instill an interdisciplinary perspective on the life and legacy of Mohandas (“Mahatma”) Karamchand Gandhi (1869–1948). Materials to be examined include Gandhi’s own writings; writings about Gandhi by his contemporaries and by individuals deeply influenced by him, and writings by scholars of different disciplines.

P Schmitthenner | pschmitt@vt.edu | MAJWM 100 | MW 2:30-3:45 PM | Not a Pathways course

ASIA MINOR: LANGUAGE

CHN 1105: Elementary Chinese

Fundamentals of the Chinese language with emphasis on developing proficiency in practical language use and cultural competency. 1105 is for students with no prior knowledge of the language.

R Chang | rebecc2@vt.edu | RAND 206A | MWF 12:20-1:10 PM (CRN: 83020) | Not a Pathways course

R Chang | rebecc2@vt.edu | PAM 1010 | MWF 10:10-11:00 AM (CRN: 83021) | Not a Pathways course

CHN 1106 (CRN: 83022): Elementary Chinese

Fundamentals of the Chinese language with emphasis on developing proficiency in practical language use and cultural competency. CHN 1106 is for students who have completed 1105, or more than one year, but less than three years of high school Chinese.


R Chang | rebecc2@vt.edu | DER 1084 | MWF 11:15 AM-12:05 PM | Not a Pathways course

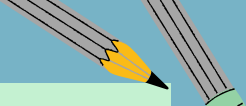
CHN 2105 (Pre: 1106): Intermediate Chinese

Emphasizes comprehension of written and spoken Mandarin Chinese, communication in Chinese; study of some literature and culture of the Chinese people. CHN 2105 is for students who have completed 1105 and 1106 or equivalent.

Staff | Staff@vt.edu | DAV 201 | MWF 1:25-2:15 PM (CRN: 83023) | Not a Pathways course

Staff | Staff@vt.edu | RAND 121 | MWF 12:20-1:10 PM (CRN: 83024) | Not a Pathways course





CHN 2106 (CRN: 83025) (Pre: 1106): Intermediate Chinese

Reinforcement of oral proficiency, reading, grammar, and writing skills, allowing students to explore a broad range of texts of general and professional interest. Not recommended for native speakers. CHN 3105 is for students who have completed 2106 or equivalent.

R Chang | rebecc2@vt.edu | SEITZ 207 | MWF 1:25 PM-2:15 PM | Not a Pathways course

CHN 3105 (CRN: 83029) (Pre: 2106): Advanced Chinese

Reinforcement of oral proficiency, reading, grammar, and writing skills, allowing students to explore a broad range of texts of general and professional interest. Not recommended for native speakers. CHN 3105 is for students who have completed 2106 or equivalent.

M Teo | mcteo@vt.edu | PAM 2002 | MWF 12:20-1:10 PM | Not a Pathways course

JPN 1105: Elementary Japanese

Fundamentals of the Japanese language with emphasis on developing proficiency in practical language use and cultural competency. JPN 1105 is for students with no prior knowledge of the language.

T Mercer | teruyo95@vt.edu | WMS 220 | MWF 1:25-2:15 PM (CRN: 86833) | Not a Pathways course


S Simmerman | slsimmerman@vt.edu | PAM 2001 | MWF 9:05-9:55 AM (CRN: 86834) | Not a Pathways course

T Mercer | teruyo95@vt.edu | WHIT 349 | MWF 12:20-1:10 PM (CRN: 86835) | Not a Pathways course

S Simmerman | slsimmerman@vt.edu | PAT 12 | MWF 1:25-2:15 PM (CRN: 86837) | Not a Pathways course

S Simmerman | slsimmerman@vt.edu | WHIT 257 | MWF 12:20-1:10 PM (CRN: 86838) | Not a Pathways course

S Simmerman | slsimmerman@vt.edu | DER 1084 | MWF 10:10-11:00 AM (CRN: 86839) | Not a Pathways course





JPN 2105 (Pre: 1106): Intermediate Japanese

Emphasizes comprehension of written and spoken Japanese, communication in Japanese; study of some literature and culture of the Japanese people. JPN 2105 is for students who have completed 1105 and 1106 or equivalent.

S Simmerman | slsimmerman@vt.edu | PAT 12 | MWF 11:15 AM-12:05 PM (CRN: 86840) |

Not a Pathways course

Y Kumazawa | yasuko3@vt.edu | MCB 134 | MWF 9:05-9:55 AM (CRN: 86841) | Not a

Pathways course

Y Kumazawa | yasuko3@vt.edu | MCB 134 | MWF 10:10-11:00 AM (CRN: 86842) | Not a

Pathways course

JPN 3105 (Pre: 2106): Advanced Japanese

Practice in communication skills in Japanese both orally and writing, including review of grammar, directed composition and conversation, with an emphasis on pronunciation, cultural competency, and oral expressions. Not recommended for native speakers. 3106: Reinforcement of oral proficiency, reading, grammar, and writing skills, allowing students to explore a broad range of texts of general and professional interest. Not recommended for native speakers. Pre: 2106 for 3105; 3105 for 3106.

Y Kumazawa | yasuko3@vt.edu | MCB 134 | MWF 11:15 AM-12:05 PM (CRN: 86846) | Not

a Pathways course

J Sather | jsather@vt.edu | WHIT 277 | MWF 12:20 PM-1:10 PM (CRN: 86847) | Not a

Pathways course

JPN 3125 (Pre: 2106) (CRN: 86848): Japanese for Oral Proficiency

Devoted to the acquisition of spoken dialect and the enhancement of cultural competency. 3125: Provides students with the ability to converse in every day Japanese conversation. Focus on everyday conversational skills including life topics, transactions, and Japanese media. Emphasis on appropriate body language and understanding of cultural, political, and religious knowledge. 3126: Provides students with the ability to converse in advanced and complex situations. Focus on formal conversations (honorific, humble, and extra-polite) and business Japanese. Not recommended for native speakers. Pre: 2106 for 3125; 3125 for 3126.

Y Kumazawa | yasuko3@vt.edu | MCB 134 | MWF 12:20-1:10 PM | Not a Pathways

course





ASIA MINOR: SOCIAL SCIENCES AND GEOGRAPHY

PSCI 3394 (CRN: 91445) / IS 3394 (CRN: 91446) (Pre: PSCI/IS 1024 OR 2054 OR 2064 OR 2084): Comparative Politics of Immigrant Inclusion

Note: This class is not on the checksheet, but we will substitute it for the minor. Also, there are a number of prerequisites for this class. Work with the instructor to be sure you can take it.

Theories of citizenship applied across levels of government. Comparative policies for political, social, and military inclusion. Explanations for variations in policies supporting citizenship and inclusion across countries. Explanations for differences among immigrants' political inclusion across countries.

D Milly | djmilly@vt.edu | ROB 122 | TR 11:00 AM-12:15 PM | Not a Pathways course

PSCI 3584 (CRN: 89291) (Pre: 1024): Government and Politics of Asia

Introduction to governmental institutions, political behavior, and social and economic policy approaches of China and other selected countries in the Asian region.

D Milly | djmilly@vt.edu | HUTCH 207 | TR 3:30-4:45 PM | Not a Pathways course

ASIA MINOR: CAPSTONE PROJECTS/SUMMATIVE EXPERIENCE

Independent Studies, some advanced topics classes, internships, and study abroad can all count for the Capstone of the minor. Contact minor coordinator Dr. Schneider for more information.





ADDITIONAL CLASSES

ENGL 3834 (CRN: 90625) (Pre: ENGL 1106 or COMM 1016): Intercultural Prof Writing*

Focuses on intercultural and international issues in the global workplace. Explores, through examination of theoretical perspectives and practical applications, ways in which notions about culture and national identity shape professional interactions. Provides a foundational understanding of the issues involved in writing and designing documents for international audiences.

C Itchuaqiyaq | cana@vt.edu | MCB 134 | TR 9:30-10:45 AM | Not a Pathways course

ENGL 4664 (CRN: 85138) (Pre: ENGL 1106 or COMM 1016): Contemporary Fiction*

Exploring the Asian American Multiverse

Speculative fiction is a broad term to describe fiction stories with elements derived from imagination and not based in what is commonly understood as reality, prompting us to consider what counts as real and why. In reading a variety of textual and graphic novels, this course enables us to critically consider which stories and themes prevail in American literature and culture, with attention to ethnicity, gender, class, sexuality, labor, technology, disability, and trans/nationality. In particular, we'll use a selection of Asian American speculative fiction to explore our course theme—history, (counter)narratives, and alternative worlds—to analyze the form and function of counternarratives within contemporary U.S. literature. Please expect to read multiple supplementary critical readings along with each selected text to help ground our understandings in their historical and literary contexts. And yes, there will be some googly eyes and hotdog hands.

S Cassinelli | smooncassevt.edu | RAND 316 | TR 12:30-1:45 PM | Not a Pathways course





WGS 3214 (CRN: 90360) (Pre: 2264): Global Feminisms*

This seminar (discussion based) course is informed by transnational feminist and postcolonial theory to create change and build a foundation of more productive and equitable relations among social justice advocates across borders and cultural contexts. When we consider the pursuit of gender justice, we must simultaneously work to decenter patriarchal, Eurocentric and neoliberal ideals. This means studying and citing scholars of color and those from outside of western paradigms. Reading transnationally we will seek to immerse ourselves in becoming part of the change we are reading and writing about. Part of the course traces the women's movement in India and pivotal ideas from South Asian women.

Staff | Staff@vt.edu | MCB 307 | TR 12:30-1:45 PM | No Pathway

Summer Courses: Session 1 (May 22-June 30)

GEOG 3254 (CRN: 62310): Geography of East Asia*

A geographical analysis of several modern states in East Asia, specifically China, Japan and the Koreas. Economic, political, and cultural change since the end of World War II. Globalization and the emergence of China as a demographic and economic giant.

JD Boyer | joboyer@vt.edu | Online: Asynchronous class | Not a Pathways course

SPIA 2005 (CRN: 64749): Intro to Urban Analytics*

Introduction to modeling, simulation, and visualization. How models can be used to examine complex urban problems. Ethical issues in the application of computational models. Basic model building without data. Identifying data sources for simulation model building and testing. Developing and using a model to understand a complex urban problem. Manipulating models to achieve desired outcomes. Ethical issues in computational models, including data collection and data use.

A Kianmehr | akianmehrevt.edu | Online: Synchronous class | MTWRF 9:30-10:45 AM | Pathway 5a

Note: SPIA 2005, 2006, 2104 are three modules (three one-credit courses)



SPIA 2006 (CRN: 64750): Intro to Urban Analytics*

Introduction to modeling, simulation, and visualization. How models can be used to examine complex urban problems. Ethical issues in the application of computational models. Basic model building without data. Identifying data sources for simulation model building and testing. Developing and using a model to understand a complex urban problem. Manipulating models to achieve desired outcomes. Ethical issues in computational models, including data collection and data use.

A Kianmehr | akianmehrevt.edu | Online: Synchronous class | MTWRF 9:30-10:45 AM | Pathway 5a

Note: SPIA 2005, 2006, 2104 are three modules (three one-credit courses)

SPIA 2104 (CRN: 64751): Urban Analytics for Decisions*

Introduction to modeling, simulation, and visualization. How models can be used to examine complex urban problems. Ethical issues in the application of computational models. Basic model building without data. Identifying data sources for simulation model building and testing. Developing and using a model to understand a complex urban problem. Manipulating models to achieve desired outcomes. Ethical issues in computational models, including data collection and data use.

A Kianmehr | akianmehrevt.edu | Online: Synchronous class | MTWRF 9:30-10:45 AM | Pathway 5a

Note: SPIA 2005, 2006, 2104 are three modules (three one-credit courses)

Headings of groups that are classified as "Asia Minor" are classes that will count for an Asian Studies Minor.

*These courses include elements of, but are not solely focused on, Asian and Asian American Studies.

**These classes can be substituted for Asian Studies Minor.

FOR QUESTIONS, PLEASE CONTACT DR. HA NHA@VT.EDU

